



AGNES
COTTAGE

Agnes Cottage 2 Main Street, Taddington, Derbyshire, SK17 9TY



Agnes Cottage 2 Main Street

Taddington

Guide Price £325,000 - £350,000.

This spacious three double bedroom, stone-built, double-fronted mid-terrace property is brimming with character features and charm throughout. Centrally positioned within the highly regarded rural village of Taddington, the home enjoys a wonderful setting surrounded by open countryside. Taddington itself is known for its strong sense of community, offering a well-regarded primary school, a welcoming village atmosphere and an excellent country inn, making it an desirable location for those seeking a balance of rural living with everyday convenience.

The characterful accommodation begins with an entrance lobby leading through to a generous dining room, where a feature fireplace creates a warm and inviting focal point and this space flows seamlessly into a fitted kitchen equipped with a range of units and appliances. A charming dual aspect sitting room provides a bright yet cosy retreat, enhanced by a striking gritstone fireplace which houses a log burning stove, perfect for relaxed evenings.

To the first floor, the landing gives access to three well-proportioned double bedrooms along with a bathroom.

Outside, the rear garden is approached via a pathway and offers a pleasant outdoor space, being mainly laid to lawn and complemented by a seating terrace ideal for enjoying the surroundings.

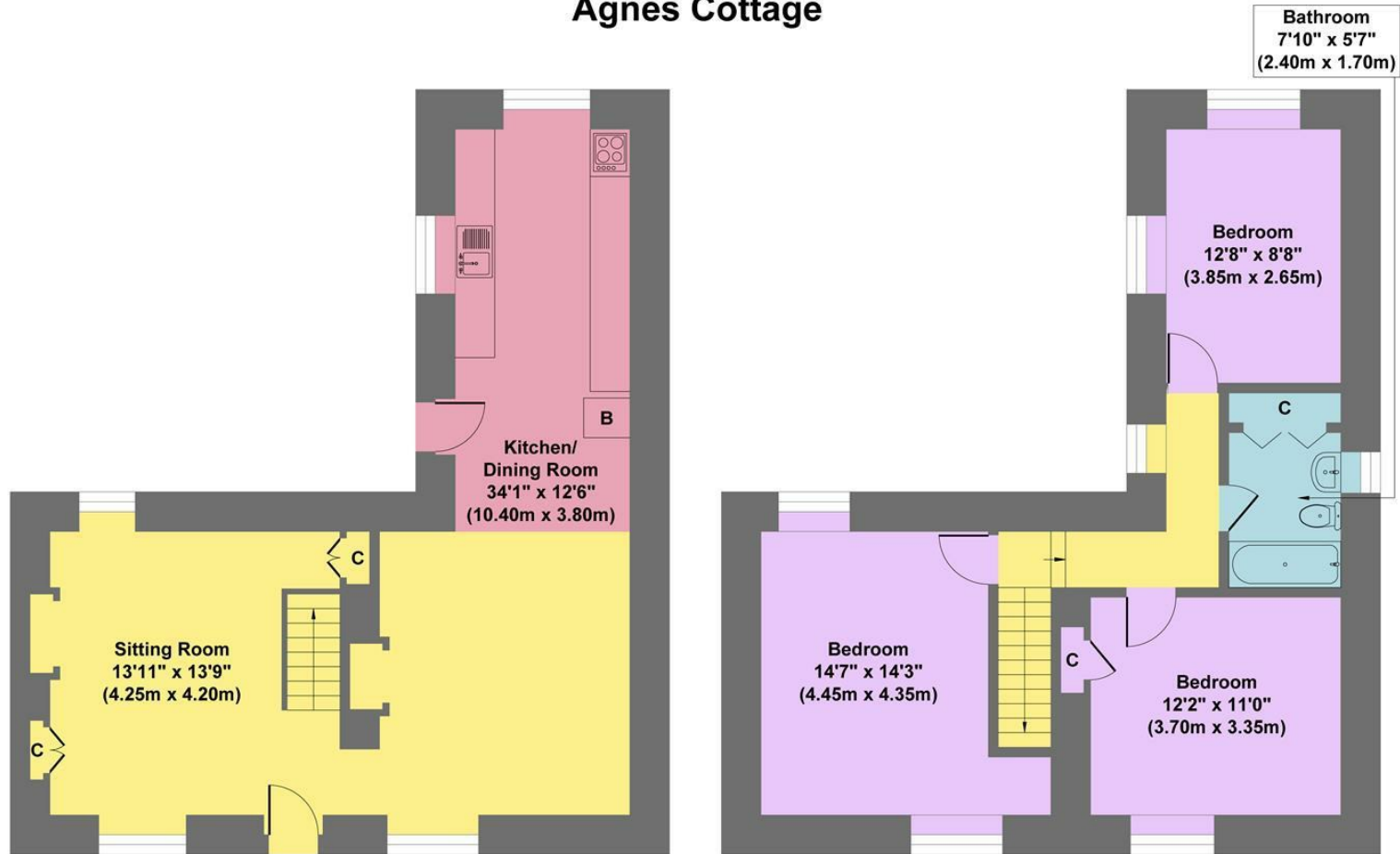
The property is offered for sale with no upward chain, presenting an excellent opportunity to acquire a character home in this sought-after Peak District village.

- Peaceful Rural Village
- Centrally Positioned
- Spacious Living Accommodation
- Character Features
- Within Highly Regarded School Catchment
- Attractive Rear Garden
- Easy Reach Of Bakewell & Buxton
- No Upward Chain
- EPC: E
- Viewings: Bakewell Office





Agnes Cottage



Ground Floor
 Approximate Floor Area
 594 sq.ft
 (55.15 sq.m.)

First Floor
 Approximate Floor Area
 581 sq.ft
 (54.00 sq.m.)

Approx. Gross Internal Floor Area 1175 sq.ft / 109.15 sq.m

Illustration for identification purposes only. Measurements are approximate, not to scale

While we endeavour to make our sales particulars fair, accurate and reliable, they are only a general guide to the property and, accordingly, if there is any point, which is of particular importance to you, please contact the relevant office. The Agents have not tested any apparatus, equipment, fittings or services and so cannot verify they are in working order. The buyer is advised to obtain verification. Please note all the measurement details are approximate and should not be relied upon as exact. All plans, floor plans and maps are for guidance purposes only and are not to scale. Under no circumstances should they be relied upon as exact or for use in planning carpets and other such fixtures, fittings or furnishings. YOUR HOME IS AT RISK IF YOU DO NOT KEEP UP REPAYMENTS ON A MORTGAGE OR OTHER LOAN SECURED ON IT. 'A Life Assurance policy may be requested.' 'Written Quotations of credit terms available on request.'

Banner Cross
 T: 0114 268 3241
 E: bannercross@saxtonmee.co.uk
www.saxtonmee.co.uk

Hathersage
 T: 01433 650009
 E: hathersage@saxtonmee.co.uk

Bakewell
 T: 01629 815307
 E: bakewell@saxtonmee.co.uk

Matlock
 T: 01629 828250
 E: matlock@saxtonmee.co.uk

